

mazon

KITSET BASE BASE MANUAL

Instruction and User Guide

PLEASE READ OUR USER GUIDE
CAREFULLY BEFORE USE

TABLE OF CONTENTS | KITSET BASE

Component Parts	01
Hardware Accessories	02
Box Sprint Assembly	03 - 05

COMPONENT PARTS | KITSET BASE

SECTION 1:

Unpack and familiarize yourself with the components.

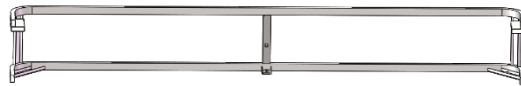
Remove the entire contents of boxes and lay the components out on the floor in the manner of following picture.

Double check the cartons to be sure you have not missed any parts left in the packing materials.

The Hardware is organized in the card step by step for convenience.

Do not remove hardware or Slats until directed.

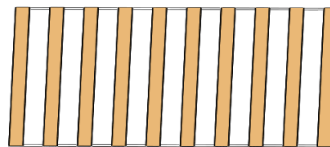
A-Head and foot support bar*2pcs



B-Center support bar*1pcs



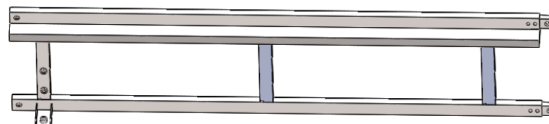
C-slat bundle*1



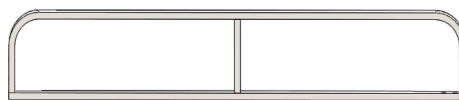
D1-Side support bar*2pcs



D2-Side support bar*2pcs



E-Middle support rail bar*2pcs
(not including Twin)

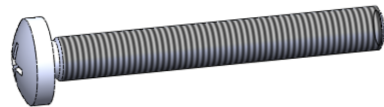


HARDWARE ACCESSORIES | KITSET BASE

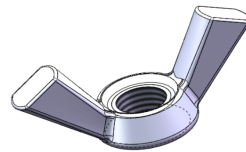
SECTION 2 :

Open all hardware accessories, arrange them according to the following picture, and count the quantity.

M6*50 screw 2pcs
not including twin



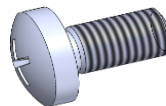
Nut 4pcs
not including twin



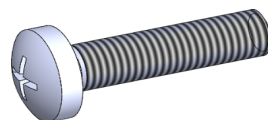
Gasket 16pcs-Twin
(F/Q/K)- 22pcs



M6*12 screw 12pcs



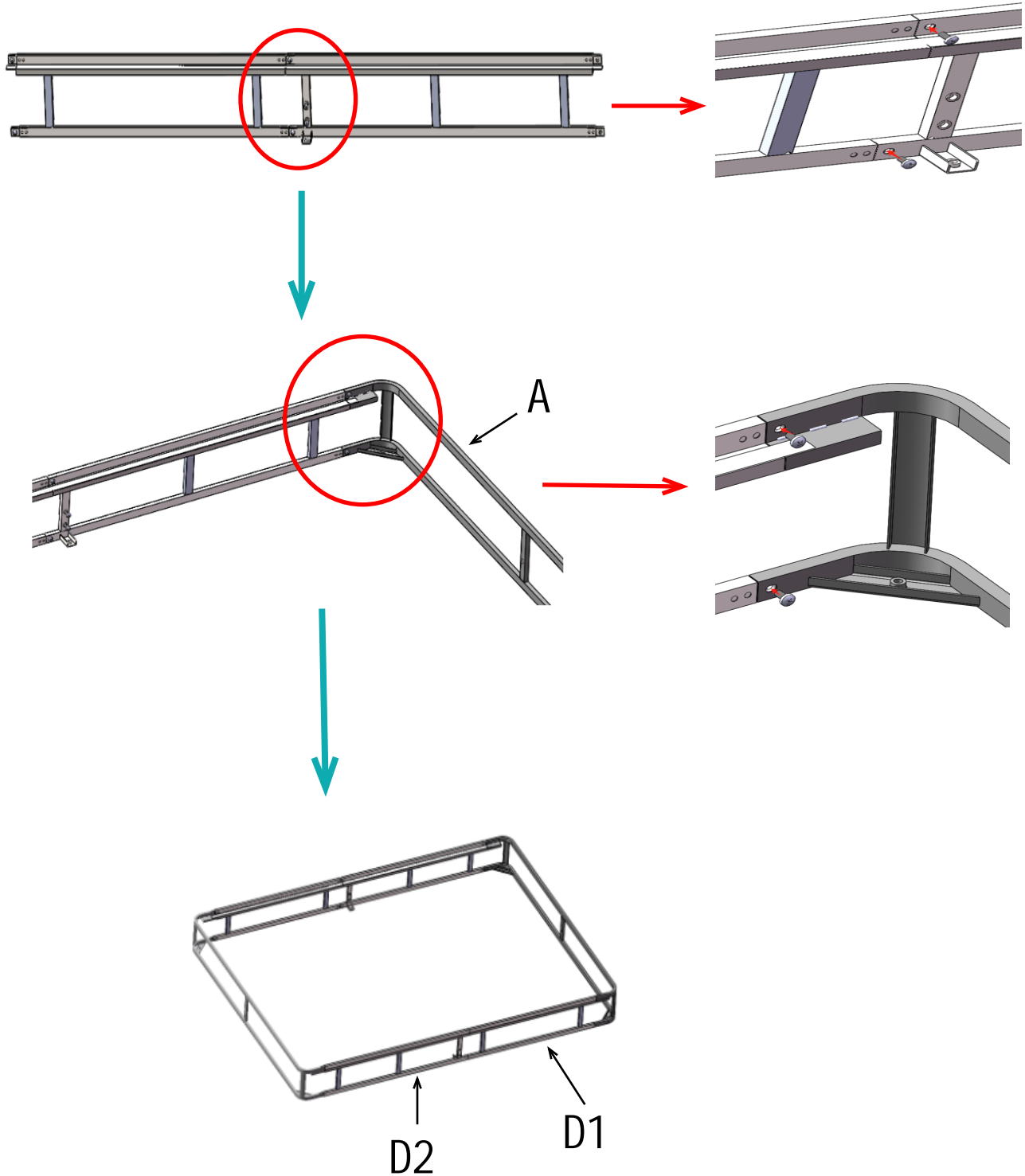
M6*25 screw 4pcs-Twin
Full/Queen/King-8pcs



BOX SPRINT ASSEMBLY | KITSET BASE

STEP 1:

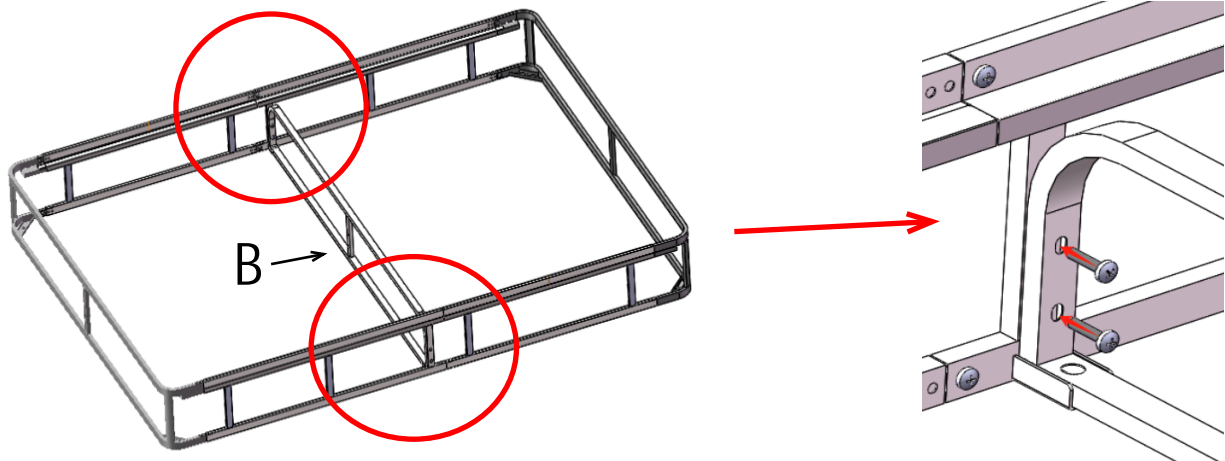
Connect the head and foot support bar with side support bar(one side need 2pcs side support bar, total 4pcs),use M6*12 screw and gasket(12 pcs).



BOX SPRINT ASSEMBLY | KITSET BASE

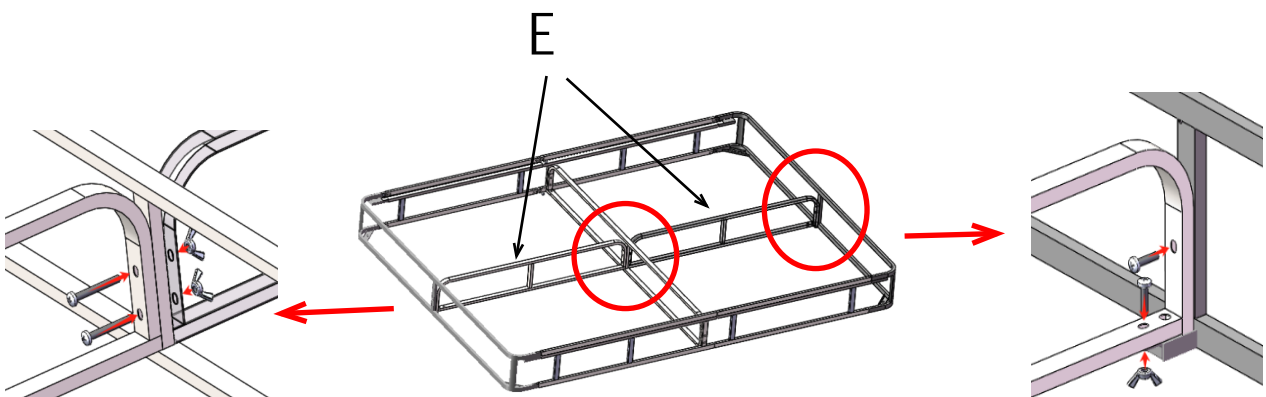
STEP 2 :

Connect side support bars with center support bar,use M6*25 screw and gasket.



STEP 3 :

Assemble the two middle support rail bars,two ends with M6*25 screw and gasket,the middle with M6*50 screw ,nut and gasket (not including Twin).



BOX SPRINT ASSEMBLY | KITSET BASE

STEP 4 :

Stick the wooden slats on the side support bar.



STEP 5 :

First pack the non-woven fabric cover, second zip the fabric up, third touch the holes on box spring (can't see the holes in the fabric), then we put the legs on it.

Note: Twin have 6 legs, Full/Queen/King/Cal king have 9 legs. (the legs you can choose assembled or unassembled).

